

# Multimon

## Central Monitoring System



### *Features :*

- *Upgradeable to 4/8/16 beds*
- *Memory for last 24 hrs*
- *Customized Setting for any specific parameter selection for each patient.*
- *ECG and SpO2 waveform can be frozen for any of the bed.*
- *Audio and Visual alarms for all parameters.*
- *On line Patient data entry for any of the bed.*
- *Specific color selection of Traces & Background for particular bed and patient.*
- *Online ECG printout of particular Channel Data.*
- *Online patient discharge summary report.*

**Maestros**<sup>™</sup>  
enabling technology for you

**Maestros Mediline Systems Ltd.**

# Multimon Central Monitoring System

## Specification :

Minimum Computer requirements :

- P-III, 500 MHz processor, 64 MB RAM
- 10 GB Hard Disk
- 1.44 MB Floppy Disk Drive
- CD drive
- SVGA 14" monitor and above.
- 2 serial ports, 1 parallel ports
- Ps2 Mouse

## Parameter Specifications :

### ECG

- Upper channel ECG with Digital heart rate display.
- Range Measurements : 0 to 300 BPM
- Gain : 5 , 10, 20 mm/mv.
- Trace speed : 25 mm/sec
- ECG trends upto 48 hrs.

### SpO2

- Lower channel plethysmograph with SpO2 value display.
- SpO2 alarms (high and low ) default at 100 and 90.
- Range Measurements : 0 to 100.
- Trends of SpO2 up to 48 hrs possible ( only numeric).

### NIBP

- Digital display of systolic, diastolic & Mean pressure.

### Trends

- Up to maximum of 48 hrs of trends for all parameters

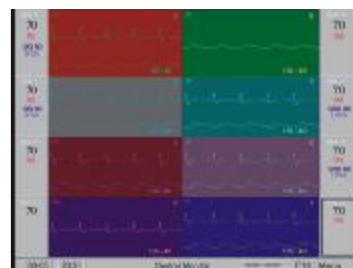
### Alarms

Simultaneous audio and visual alarms available for all parameters.

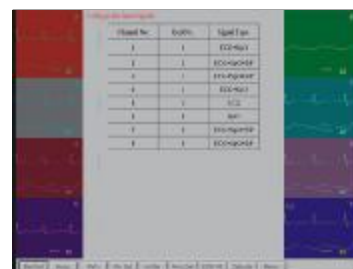
## General Specifications:

Power requirements	: 230 V A.C, 50 Hz, +/- 10%
Power consumption	: < 12 W
Dimensions	: 8 X 9 X 2 inches
Temperature	: 0-50 C
Relative Humidity	: 0-95 % RH ( non-condensing)
Weight	: 1.5 kg.
Communication	: RS- 232 interface

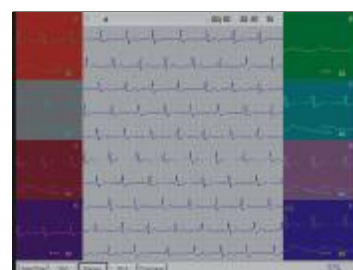
**Note:** Other monitors at fixed locations with one or two analog outputs can also be interfaced to view the parameters



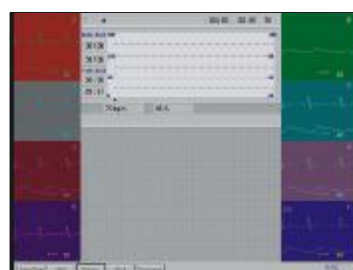
Main Screen



Parameter selection



Review



Trends